



THE FRIENDS of SADDLEWORTH ARCHAEOLOGICAL TRUST

Newsletter

No 4

Summer 2008

Retrospective 2008.

The first meeting of the year was the Annual General Meeting, which was held at Uppermill Masonic Hall on Tuesday 8th January 2008. The meeting was very well attended and we managed to transact the business of the meeting fairly quickly. The main items being the election of the officers, who were re-elected on- bloc and the amount of the annual subscription, which, on the recommendation of the Treasurer, remained the same as the previous year. After the close of the AGM, David Chaderton gave an illustrated talk entitled the 'Restoration of Wool Road Warehouse'. In the early 1970's the state of the warehouse was such that it was close to collapse and a lease was agreed by the Historical Society and British Waterways to enable a program of repair to be carried out. From 1977 until 1983 a team from the Industrial Archaeology Group of the Historical Society, many who are now members of the Archaeological Trust, repaired the structure of the warehouse and replaced the roof.



The Warehouse During Restoration

In 1983 the Historical Society transferred the Lease to the Huddersfield canal Society who, with the aid of a substantial Lottery Grant completed the restoration and today use the building as an office. **Without the restoration Wool Road Warehouse would not be standing today.**

In February Ken Booth gave an illustrated talk on '**The Hidden Frontier' Romans on the Solway Coast**. This stretches down the Cumbrian coast from Bowness on Solway to Ravenglass. This is an extension of Hadrian's Wall, it has Mileforts and Towers, the main difference being that there is no wall connecting them.



Maryport Roman Fort

The audience were told of the difficulty in locating some of the remains and shown slides and drawings of the towers and mileforts. The Roman forts on the frontier are at Beckfoot, Maryport, Burrow Walls, Moresby and Ravenglass all of which Ken illustrated with slides and plans .

March was the month of the **Third John Buckley Lecture** which was entitled ‘**Recent Industrial Archaeology. Excavations in Greater Manchester**’, an illustrated talk by **Norman Redhead**. County Archaeologist for Greater Manchester.



A capacity audience heard Norman tell of the archaeological exploration that had been under-taken during the year in Greater Manchester. The talk was accompanied by digital images of sites, maps and early records. Norman held his audience spell-bound with accounts of the diversity of the archaeology and his magnificent images .

The last lecture before the summer break was held on the 15th April and was given by Dr. Laurance Donnelly, an Exploration and Engineering Geologist who has spent considerable time exploring the Saddleworth hills. This was a repeat, by popular demand, of the lecture he gave last year. His title was ‘**The Evolution of the Saddleworth Landscape in relation to Archaeology**’ and the talk was illustrated by digital images of the Saddleworth landscape. An audience of over 40 people were enthralled to learn that the landscape of Saddleworth had originated from Antarctica millions of years ago and even now Saddleworth is moving towards Germany. Laurance answered many questions from the floor. Reports from a very appreciative audience indicated that this again was a very interesting talk.

WINTER SESSION

14th October – **English Heritage and the Archaeology of the NW Region** a slide lecture by Andrew Davison. Inspector of Ancient Monuments. Andrew was involved with the last excavations at Castleshaw and is involved with the current excavations at Buckton Castle and has promised to tell us of his experiences at both sites.

18th November – **Roman Manchester 2006** a slide lecture by Dr Richard Gregory. Senior Archaeologist with the Department of Archaeology, Manchester University. Richard will tell us of the extensive excavations he directed in 2006 within the vicus

area at the Roman fort in Manchester. This excavation produced an extensive collection of Roman Pottery.

Norman Redhead will give the final lecture of the Winter Session on Tuesday 9th December with an illustrated talk entitled '**The Castles of Greater Manchester including Bucton Castle**'. Norman will tell of work carried on such castles as Bury and Stockport as well as bringing us upto date with the work that has been ongoing at Buckton Castle.

We are hoping to have speakers in 2009 on the following subjects.

Laurance Donnelly will give us a different paper relating to Geology

Brian Sitch will tell us the story of Lindow Man

Brian Grimsditch will talk of the excavations he has directed at Buckton Castle

Ken Booth will tell us about two northern Roman Frontiers, The Stanegate and the Antonine Wall.

We have yet to approach Peter Noble with his Mellor Iron Age Fort talk, Ian Miller to tell us of his excavations on the Roman Bath-House in Wigan and Norman Redhead to give his annual report on archaeology in Greater Manchester.

The **2008 STONEHOUSE LECTURE** will be held on Saturday 1st November 2008 at the Royal George Hotel, Greenfield. 2pm for 2.30pm..

**THE SADDLEWORTH ARCHAEOLOGICAL
TRUST**

The Trustees invite you and your friends to the Seventh Annual
Stonehouse Lecture.

THE ARCHEOLOGY of COTTON
'DIGGING in ROMAN EGYPT'

An illustrated talk by

Dr. John Peter Wild. F.S.A.

Hon. Research Fellow in Archaeology and Joint Director of the Manchester Ancient Textile
Unit, The University of Manchester.

Chairman of the Nene Valley Archaeological Trust

Saturday 1st November 2008

2pm for 2.30pm

Royal George Hotel, Manchester Road, Greenfield.

FROM the TREASURER. A small number of members have not yet renewed their membership. We do hope that they will continue to support the Trust and the work it does in trying to preserve both the archaeological and historical heritage of Saddleworth at a time when the district is coming under great pressure from the additional hazards of indiscriminate development and threats to the Green Belt. If you have not yet rejoined, a subscription form is enclosed; we value your membership and hope that we can look forward to your continued support.

Saddleworth Archaeological Trust

Gazetteer of Prehistoric sites & finds from the Saddleworth area

SITE – Green Withens Reservoir

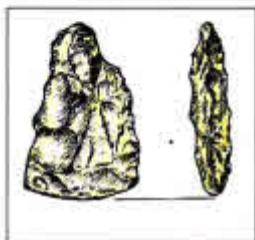
FILE REF.

O.S.Ref. – SD991165

MAP REF.

NATURE OF FIND – Flint Burnisher

PERIOD – Late Neolithic



This implement was found during the drought of 1976 on the bank of Green Withens Reservoir by Mr. H.E. Iredale. It is light coloured, almost white flint and has the appearance of a small axe with a narrow butt and a wide cutting edge. The edge is round and polished and in the opinion of T.G. Manby, may have been used or reused for the polishing and rubbing of skins (for leather work). It may have originally started life as a true flint axe.

Size – 2.75 inches (70mm) long x 1.75 inches (45mm) at the cutting edge & 0.5 inches (14mm) thick.

The Burnisher is currently (2004) housed in Saddleworth Museum.
Acc. No. - 81.798.5 (11)

THE PREHISTORY of SADDLEWORTH & ADJACENT AREAS by STONEHOUSE
2001

Page 49 – The above information is taken from the information given by Dr. Stonehouse

A page from our Gazetteer of Prehistoric finds